

Mortgage Calculator

Mortgage Calculator

Your Mortgage Payment Information

[Block](#)

Home Value: \$

Credit profile:

Loan amount: \$

Loan Purpose:

Interest rate: %

Loan term: years

Start date:

Property tax: %

PMI: %

[Output parameters »](#)

Current Mortgage Rates

Mortgage Repayment Summary

\$1,003.45 **\$361,241.83**

Monthly Payment Total of 360 Payments

\$104,190.99 **Dec, 2040**

Total Interest Paid Pay-off Date

\$133,200.00 **\$5,850.83**

Total Tax Paid Total PMI Paid

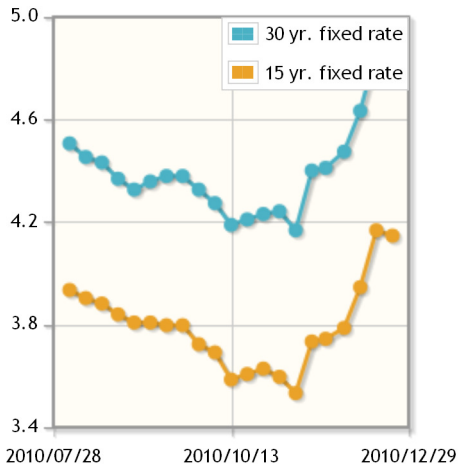
Monthly PMI **Dec, 2020**

119 Monthly PMI Payments of \$49.17 Each PMI Pay-off Date

Monthly vs Bi-weekly Payment

\$1,003.45 **\$501.72**

Monthly Payment Bi-weekly Payment



[Free mortgage rates widget for your website](#)

Due to record low mortgage rates, many homeowners are refinancing to lock in savings. Get a free no obligation quote from Lending Tree. How much money will you save with a ?

Dec, 2040 **Mar, 2036**

Monthly Pay-off Date Bi-weekly Pay-off Date

\$104,190.99 **\$83,920.61**

Total Interest Paid Total Interest Paid

Total Interest Savings:
\$20,270.38

(Block)

Take Advantage of Historically Low Mortgage Rates Today!



Are you a Realtor, real estate agent, mortgage broker, or real estate professional?

Help your customers buy a home today by [installing this free mortgage calculator on your website.](#)

© 2007 - 2011 www.mortgagecalculator.org

[Mortgage Refinance Calculator](#) + [Interest Only Calculator](#) + [More Calculators](#) + [Blog](#) + [Mortgage Rates](#) + [Helpful Advice](#) + [Free Realtor Tools](#) + [Contact](#)